

### Port II Peer Podcasting Skills

Create simple and entertaining podcasts and radio plays. Using digital sound recording equipment; learn about basic sound recording, editing and web publishing, or develop creative skills such as basic script writing, interviewing and simple sound effect production.

*When: Tuesdays 9 - 11.30am: **starts March 7***

*Where: Port Melbourne Trugo Club, 219 Esplanade East, Port Melbourne*



### Art Attack

Bring out your inner talents and see your creativity become a work of art. Develop techniques in drawing, mosaics, painting and other mixed media.

*When: Thursdays 1.00pm - 3.00pm -*

*Where: Alma Road Community House, 200 Alma Road, St Kilda East.*



### Wild at Heart Music Skills

Develop your musical ability in songwriting, recording and performance to a professional level, or for your own personal enjoyment.

*When: Wednesdays 12.00pm - 3.00pm*

*Where: Sol Green Community Centre, Cnr Montague and Coventry St., South Melbourne.*



### Family in Focus

Develop skills to help your kids thrive throughout their school years. Topics include financial wellbeing, computer skills, building resilience, positive parenting, and more.

*Contact 8598 6600 or [info-support@ppcg.org.au](mailto:info-support@ppcg.org.au) for more details.*

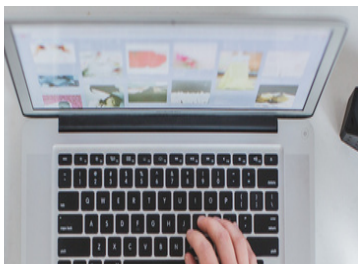


### Work This Way - Training and Employment Program

Learn skills in either gardening or cooking with the opportunity to gain relevant certificates. Then practice your skills through work experience, with the potential to start a new job.

*Cooking Class - Mondays 1.30 - 3.30pm*

*Gardening Class - Wednesdays 1.30 - 3.30pm*



### Computer Classes **EXTRA CLASS!!!**

**Digital Essentials** - Learn to use smartphone, laptop, tablet, iPad for everyday on-line needs including news, calendar, reminders, music and podcasts, notes and public transport planning.

*When Wednesdays 10am - 12 noon*

*: : St Kilda Library Community Room, Carlisle St., St Kilda*

**Where**

**AND**

*When: Wednesdays 1 - 3pm*

*Where: Alma Road Community House, 200 Alma Rd., St Kilda East*



### Recreational and Social Connection Activities

*Bookings essential. Contact [info-support@ppcg.org.au](mailto:info-support@ppcg.org.au) or phone 8598 6600*

*Gym classes - Tuesdays 2.30-3.30pm at St Kilda PCYC. 179 Inkerman St., St Kilda - Cost: \$5*

*Bushwalking - **Saturday 11/3/23**. Register your interest. Cost: \$6*

*Pier fishing in Port Phillip Register your interest and we will keep you updated.*

*Cost: \$5*

*Digital Crossword Club - Thursdays 10.30 -11.30am at St Kilda Library. Come and learn how to do crosswords on your iphone, ipad or laptop. It's easy and fun! Cost: Free.*