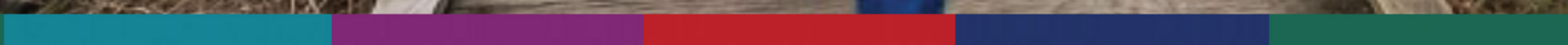




**PORT PHILLIP
COMMUNITY
GROUP** // **EST.
1973**

Strategic Plan 2025–2029





**PORT PHILLIP
COMMUNITY
GROUP** // EST.
1973

Vision

An inclusive community where everyone belongs.

Purpose

To foster connections and strengthen communities to thrive.

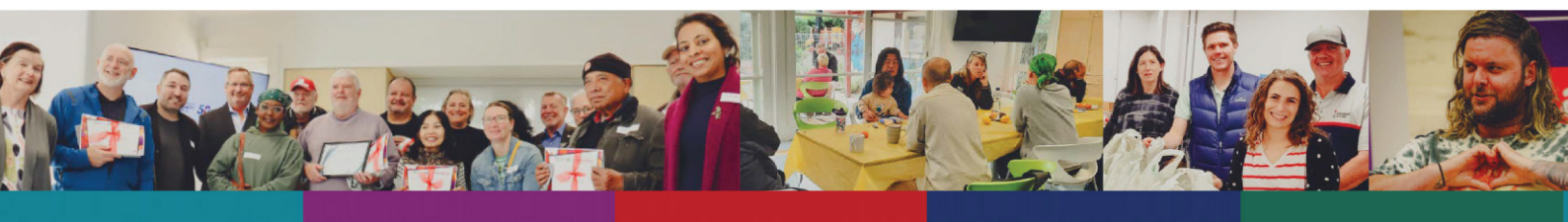
Mission

To work with community members and promote wellness by providing early intervention services.

Strategic Context

Port Phillip Community Group (PPCG) continues to evolve its partnerships and expand its services to create a more resilient community. As our community struggles with housing affordability and an uncertain geo-political environment, we have pivoted our focus to champion wellness and skill development for everyone. We aim to provide community members and staff with tools to help build resilience.

Our Strategic Plan for 2025-2029 focuses on developing new partnerships whilst reducing duplication and building social cohesion. We remain committed to creating a more inclusive and equitable society in the City of Port Phillip for the next 50 years.





Strategic Direction 1: Impactful Partnerships

We leverage our networks and community connections to create social capital.

Success is:

When we deliver efficient targeted services that reduce unnecessary duplication.

When community members have resources to participate in community.

When equity and diversity are reflected in our partnerships.

When we are financially sustainable and well governed.

When we work with multiple and recurring funders to achieve mutual outcomes.



Strategic Direction 2: Innovative Services

We respond to changing community needs by identifying service gaps and responding in a timely manner.

Success is:

When we use trauma informed principles to address loneliness and social isolation.

When we create safe spaces for people seeking assistance to access specialist services.

When we provide outreach and place-based options that meet the needs of the community.

When people have a positive experience of using or working within the service.

When we provide opportunities for members of the community to connect and learn.



Strategic Direction 3: Resilient Communities

We build social cohesion by walking alongside people in their journey to self empowerment.

Success is:

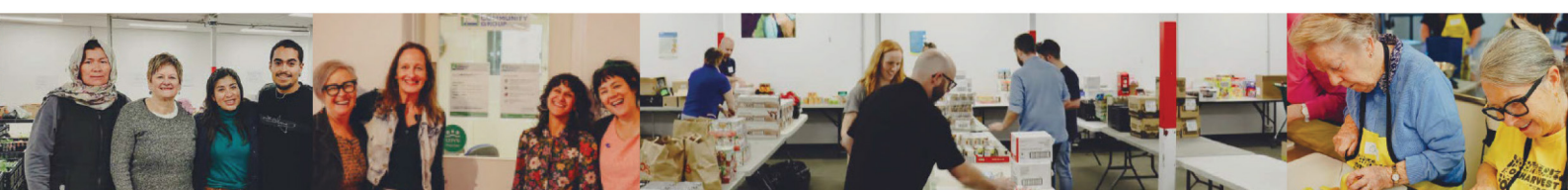
When physical, psychological and emotional safety of people who use the service and the staff who provide them is prioritised.

When policies and procedures are transparent and build trust with staff, service users and the community.

When pathways are created to engage and retain volunteers.

When services are culturally appropriate.

When community members and staff are provided with social and emotional tools to help build resilience.



We value:

Respect

We treat everyone with dignity and fairness.

We demonstrate this value by communicating constructively.

Inclusivity

We embrace diversity, celebrate different voices and foster participation.

We demonstrate this value by questioning assumptions and bias.

Compassion

We acknowledge everyone's vulnerability and humanity in a non-judgemental manner.

We demonstrate this value by active listening and kindness in all our interactions.

Innovation

We are flexible, brave, creative and curious.

We demonstrate this value by continuous improvement and thought leadership in all aspects of our work.



161 Chapel St, St Kilda East, 3183

200 Alma Road St Kilda, 3182

Ph: 8598 6600

infor-support@ppcg.org.au

www.ppcg.org.au

ABN 34 844 707 349



PLEASE CONSIDER MAKING
A DONATION TO PPCG
BY SCANNING THIS QR CODE

Port Phillip Community Group respectfully acknowledges the Yalukit Willam Clan of the Boon Wurrung, We pay our respects to their elders, past present and emerging. We acknowledge and uphold their continuing relationship to this land.